

South West Development Centre, Arts & Health South West and UWE present:

Sustainability, Arts & Mental Wellbeing

Weds 1st July

9.30am-4.30pm

St Mathias Campus, University of the West of England, Bristol

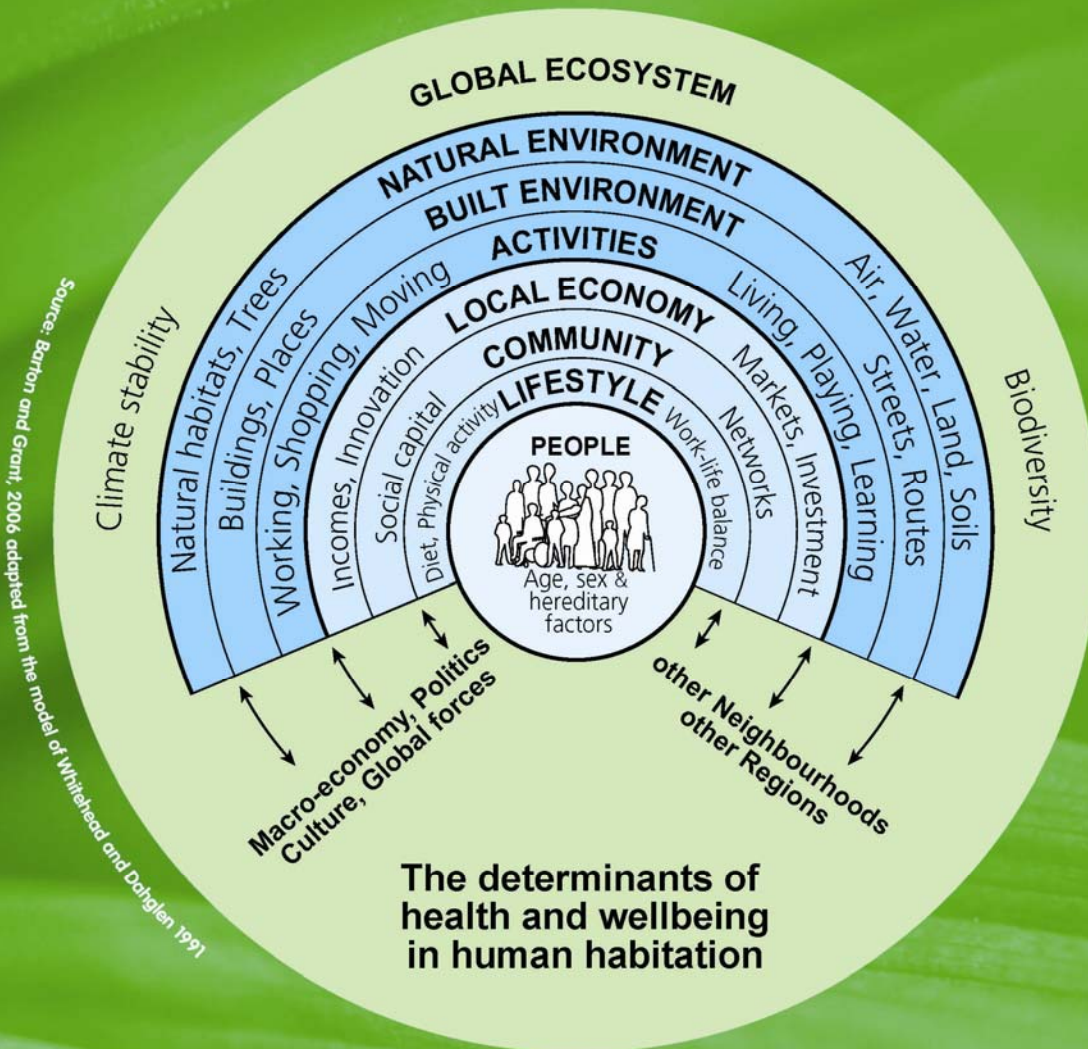
Aims of the event:

- To explore leading edge thinking around the arts, sustainability and mental wellbeing
- To demonstrate, through inspirational case studies, how the arts can contribute to the care and inequalities agenda
- To promote how we can embed evidence about arts, mental wellbeing and sustainability in health policy and practice
- To promote sustainable working with the arts in order to promote our collective wellbeing

Programme of Events:

9.30am-10am	Registration & Refreshments
10am-10.10am	Welcome and Introductions followed by Dr Marian Naidoo - Naidoo & Associates / University of Bath: Sustainability Principles, Creativity & Mental Wellbeing
10.10am-10.30am	Dr Sam Everington - Bromley By Bow Centre: Ensuring a Strong Healthy Community
10.30am-10.35am	Dr Susan O'Connor - Department of Health: New Horizons for Mental Health
10.35am-10.40am	Jane Willis - Willis Newson / Arts & Health South West: Sustainable Working with the Arts
10.40am-10.45am	Professor Norma Daykin: University of the West of England: Developing the Evidence Base
10.45am-11.15am	Discussion and Questions to the panel led by Shaun Naidoo
11.15am-11.45am	Tea/coffee – Exhibition
11.45am-12.30am	Facilitated Group Work
12.30pm-1.30pm	Buffet Lunch / Networking / Exhibition
1.30pm-1.45pm	Engaging Creatively - Dr Marian Naidoo
1.45pm-3.15pm	Group Work: Collaboration & Next Steps Rebecca Hardwick
3.15pm-3.30pm	Tea/coffee
3.30pm-4.25pm	Questions to the panel
4.25pm-4.30pm	Rose Flint Poetry Performance / Close

The Health Map



Source: Barton and Grant, 2006, adapted from the model of Whitehead and Dahlgren 1991

The Health Map, created at the UWE Institute for Sustainability, Health and Environment and WHO Collaborative Centre for Healthy Cities and Urban Policy demonstrates how the many complex strands involved in sustainability, health and the environment are connected. With people's health at the centre, this map helps us to understand the wider determinants of health in human settlements and in the neighbourhoods we build. This map (which can also be found at www.uwe.ac.uk/ish) links to a wide range of associated research in the University.

